

# Stainless Steel Horizontal Multistage Pump — SHM(T)2

## Applications

- Air-conditioning system
- Cooling system
- Washing and cleaning system
- Water treatment
- Aquaculture
- Fertilizing / metering system
- Environmental application

## Motor

- Fitted with a totally enclosed, fan-cooled
- Enclosure class: IP 55
- Insulation class: F
- Standard voltage: 1x220-230/240V (50Hz)
  - 3x200-220/346-380V
  - 3x220-240/380-415V
  - 3x220-255/380-440V

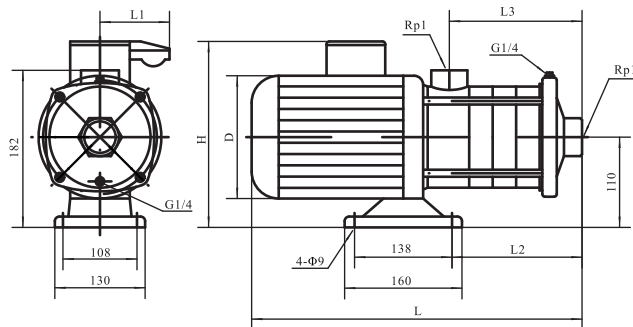


## Operation conditions

- Liquid Temperature:
  - Normal temperature: -15°C~+70°C
  - Hot water: -15°C~+105°C
- Environment Temperature: Max. 40°C
- Altitude: Max. 1000m
- Operation pressure: Max. 10 bar

## Material

- Inlet & outlet chamber: Cast iron/Stainless steel (304/316)
- Impeller: Stainless steel (304/316)
- Shell: Stainless steel (304/316)
- Shaft: Stainless steel (304/316)
- Mechanical seal: Graphite / SIC

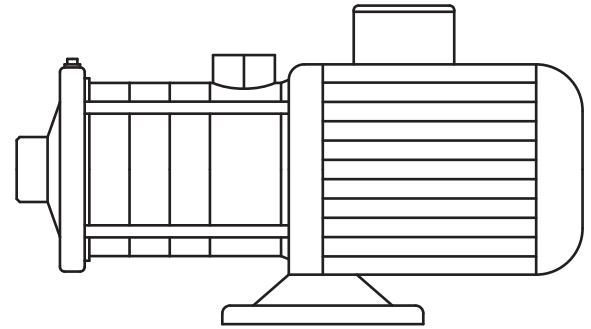
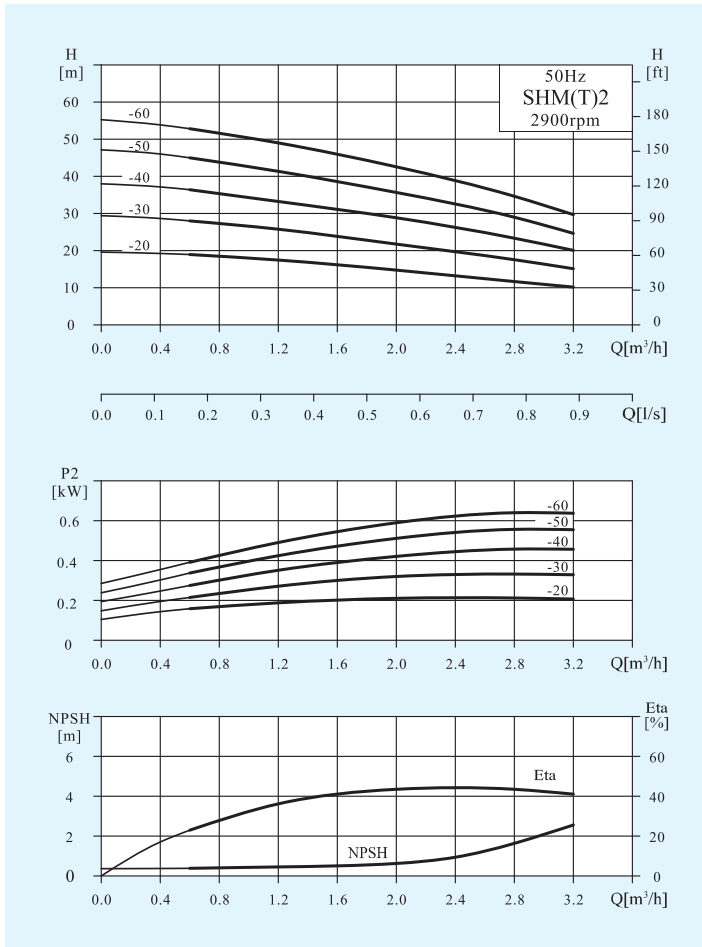


## Performance Table

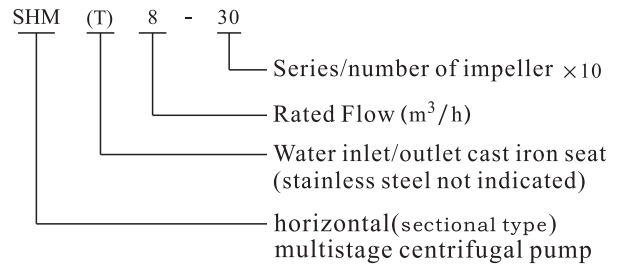
Model	Associated motor		Q (m <sup>3</sup> /h)	0.6	1.2	1.6	2	2.4	2.8	3.2
	(kW)	(hp)								
SHM(T)2-20	0.37	0.5	H (m)	18.6	17.6	16	15	13.5	10.6	9.3
SHM(T)2-30	0.37	0.5		27.7	26	24	22	19.5	16.5	13.5
SHM(T)2-40	0.55	0.75		35.7	34	32	29	25.5	23.5	19
SHM(T)2-50	0.55	0.75		45	42	39	36	33	28	24.5
SHM(T)2-60	0.75	1		53	50	47.5	43.5	39	34	29.5

# Stainless Steel Horizontal Multistage Pump — SHM(T)2

## Performance Curves



## SHM/SHMT

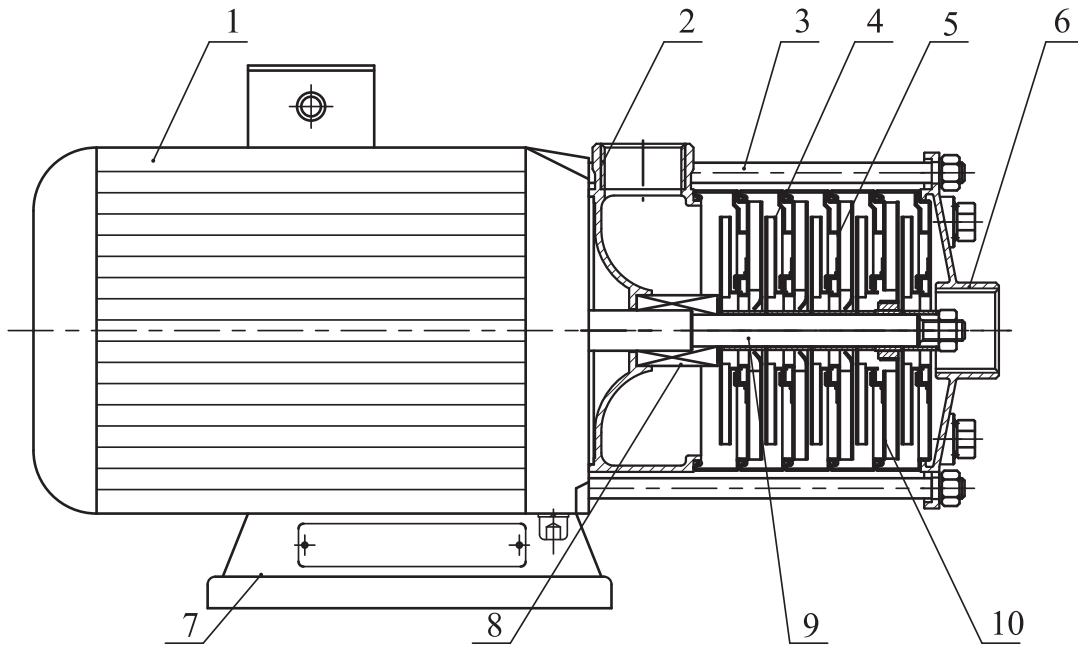


## Dimension & Weight

Motor	Model	Specification (mm)						Net Weight (kg)
		L	L1	L2	L3	H	D	
Three phase /Single phase	SHM(T)2-20	305	/96	87	84	215/230	145	13
	SHM(T)2-30	323	/96	105	102	215/230	145	13
	SHM(T)2-40	341	/96	123	120	215/230	145	14
	SHM(T)2-50	359	/96	141	138	215/230	145	14
	SHM(T)2-60	422	/100	159	156	225/245	170	16

# Stainless Steel Horizontal Multistage Pump — SHM(T)2

## Structure chart:SHM



## Material:SHM

NO	Description	Material	AISI/ASTM	NO	Description	Material	AISI/ASTM
1	Motor	Assembling unit		6	Inlet seat	Stainless	AISI304
2	Outlet seat	Stainless steel	AISI304	7	Base plate	Steel	AISI11015
3	Tie rod	Stainless steel	AISI304	8	Mechanical seal	Assembling unit	
4	Impeller	Stainless steel	AISI304	9	Shaft	Stainless	AISI304
5	Diffuser	Stainless steel	AISI304	10	Support diffuser.	Stainless	AISI304