

Stainless Steel Horizontal Multistage Pump — SHM(T)4

Applications

- Air-conditioning system
- Cooling system
- Washing and cleaning system
- Water treatment
- Aquaculture
- Fertilizing / metering system
- Environmental application

Motor

- Fitted with a totally enclosed, fan-cooled
- Enclosure class: IP 55
- Insulation class: F
- Standard voltage: 1x220-230/240V
(50Hz) 3x200-220/346-380V
3x220-240/380-415V
3x220-255/380-440V

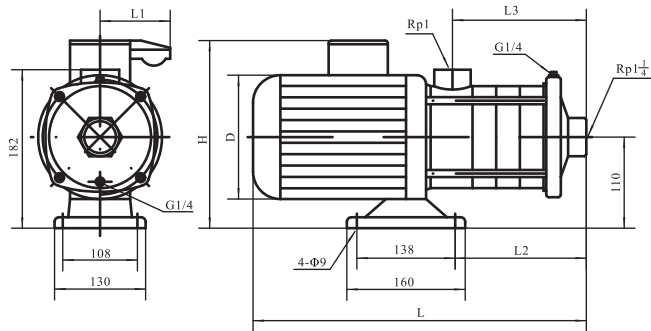


Operation conditions

- **Liquid Temperature:**
Normal temperature: $-15^{\circ}\text{C} \sim +70^{\circ}\text{C}$
Hot water: $-15^{\circ}\text{C} \sim +105^{\circ}\text{C}$
- **Environment Temperature:** Max. 40°C
- **Altitude:** Max. 1000m
- **Operation pressure:** Max. 10 bar

Material

- **Inlet & outlet chamber:**
Cast iron/Stainless steel (304/316)
- **Impeller:** Stainless steel (304/316)
- **Shell:** Stainless steel (304/316)
- **Shaft:** Stainless steel (304/316)
- **Mechanical seal:** Graphite / SIC

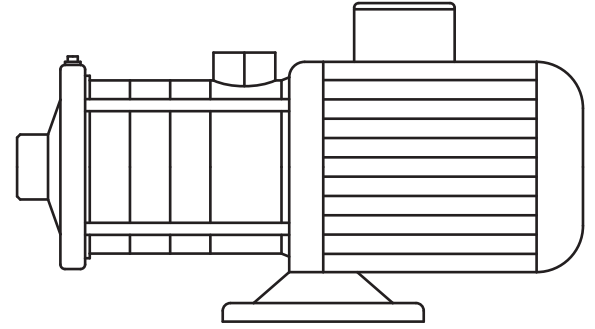
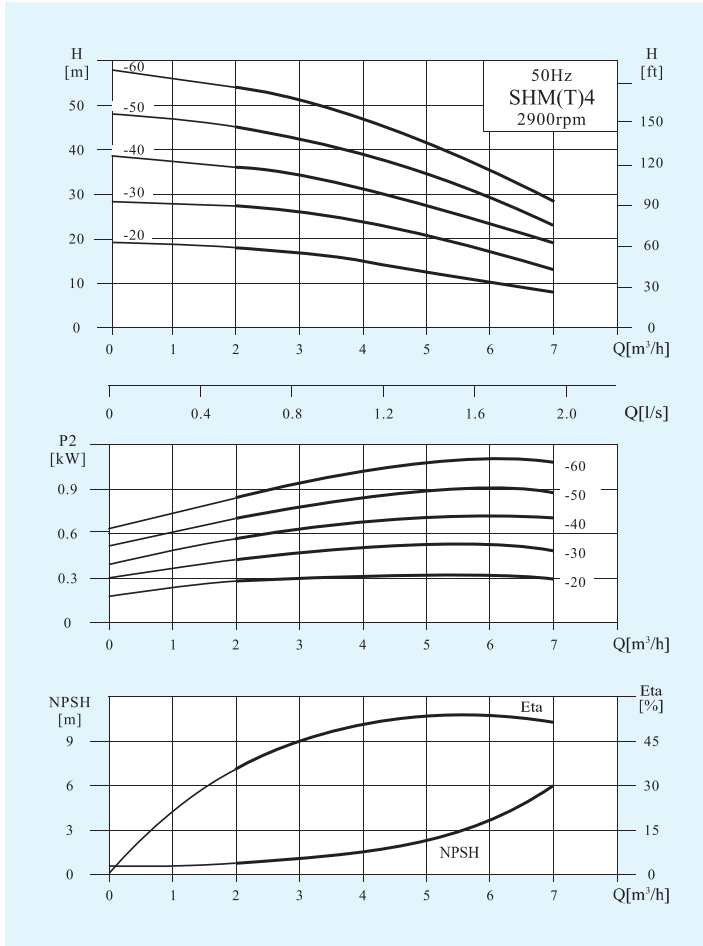


Performance Table

Model	Associated motor		Q (m ³ /h)	1	2	3	4	5	6	7
	(kW)	(hp)								
SHM(T)4-20	0.37	0.55	H (m)	19	18	17	15	12.5	10	7.5
SHM(T)4-30	0.55	0.75		28	27	26	23.5	20.5	17	13
SHM(T)4-40	0.75	1		37.5	36	34	31	27	23	19
SHM(T)4-50	1.1	1.5		47	45	42.5	39	34	29	23
SHM(T)4-60	1.1	1.5		56	54	51	47	41.5	35.5	28

Stainless Steel Horizontal Multistage Pump — SHM(T)4

Performance Curves



SHM/SHMT

SHM (T) 8 - 30

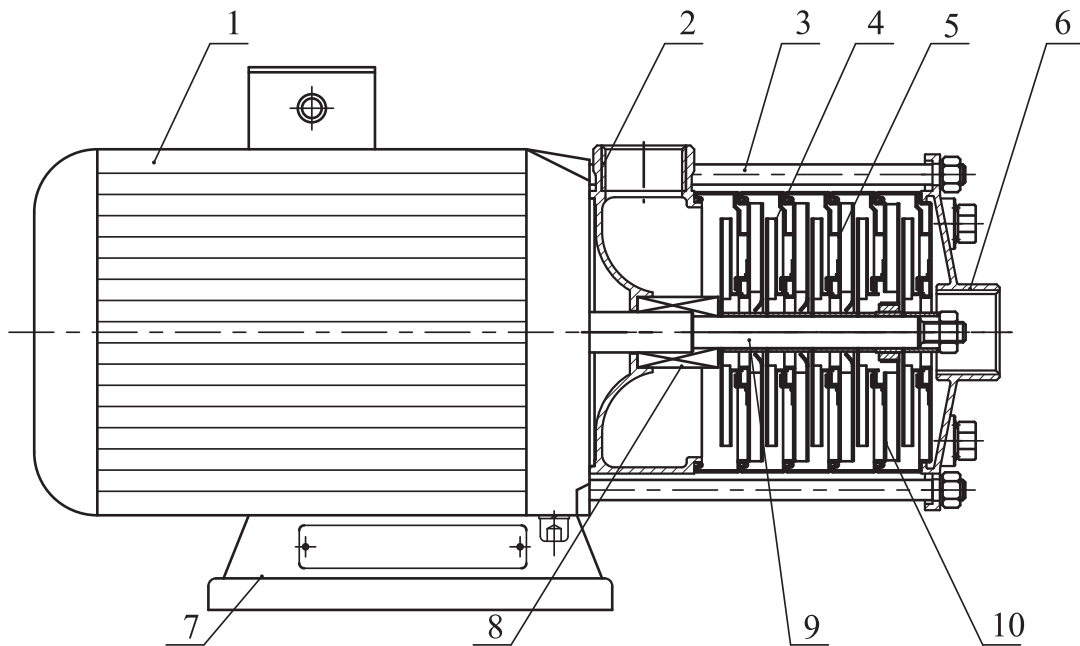
- Series/number of impeller × 10
- Rated Flow (m³/h)
- Water inlet/outlet cast iron seat (stainless steel not indicated)
- horizontal(sectional type) multistage centrifugal pump

Dimension&Weight

Motor	Model	Specification (mm)						Net Weight (kg)
		L	L1	L2	L3	H	D	
Three phase /Single phase	SHM(T)4-20	329	/96	105	102	215/230	145	12
	SHM(T)4-30	356	/96	132	129	215/230	145	13
	SHM(T)4-40	416	/100	159	156	225/245	170	14
	SHM(T)4-50	455	/100	188	183	225/245	170	16
	SHM(T)4-60	482	/100	215	210	225/245	170	16

Stainless Steel Horizontal Multistage Pump — SHM(T)4

Structure chart:SHM



Material:SHM

NO	Description	Material	AISI/ASTM	NO	Description	Material	AISI/ASTM
1	Motor	Assembling unit		6	Inlet seat	Stainless	AISI304
2	Outlet seat	Stainless steel	AISI304	7	Base plate	Steel	AISI11015
3	Tie rod	Stainless steel	AISI304	8	Mechanical seal	Assembling unit	
4	Impeller	Stainless steel	AISI304	9	Shaft	Stainless	AISI304
5	Diffuser	Stainless steel	AISI304	10	Support diffuser.	Stainless	AISI304