

Stainless Steel Horizontal Multistage Pump — SHM(T)8

Applications

- Air-conditioning system
- Cooling system
- Washing and cleaning system
- Water treatment
- Aquaculture
- Fertilizing / metering system
- Environmental application

Motor

- Fitted with a totally enclosed, fan-cooled
- Enclosure class: IP 55
- Insulation class: F
- Standard voltage: 1x220-230/240V (50Hz)
- 3x200-220/346-380V
- 3x220-240/380-415V
- 3x220-255/380-440V

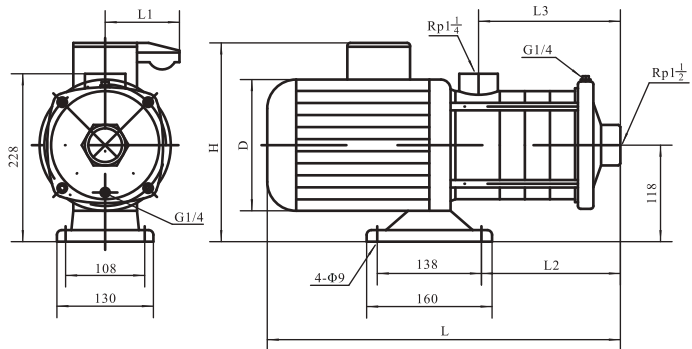


Operation conditions

- Liquid Temperature: Normal temperature: $-15^{\circ}\text{C}\sim+70^{\circ}\text{C}$
Hot water: $-15^{\circ}\text{C}\sim+105^{\circ}\text{C}$
- Environment Temperature: Max. 40°C
- Altitude: Max. 1000m
- Operation pressure: Max. 10 bar

Material

- Inlet & outlet chamber: Cast iron/Stainless steel (304/316)
- Impeller: Stainless steel (304/316)
- Shell: Stainless steel (304/316)
- Shaft: Stainless steel (304/316)
- Mechanical seal: Graphite / SIC

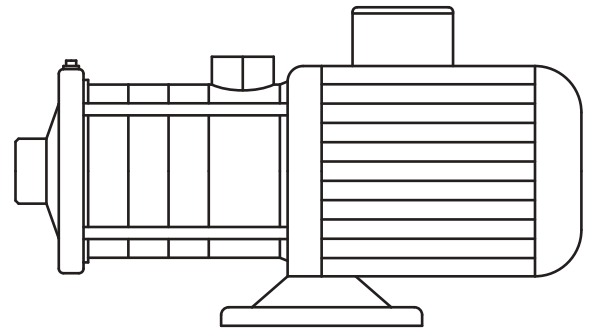
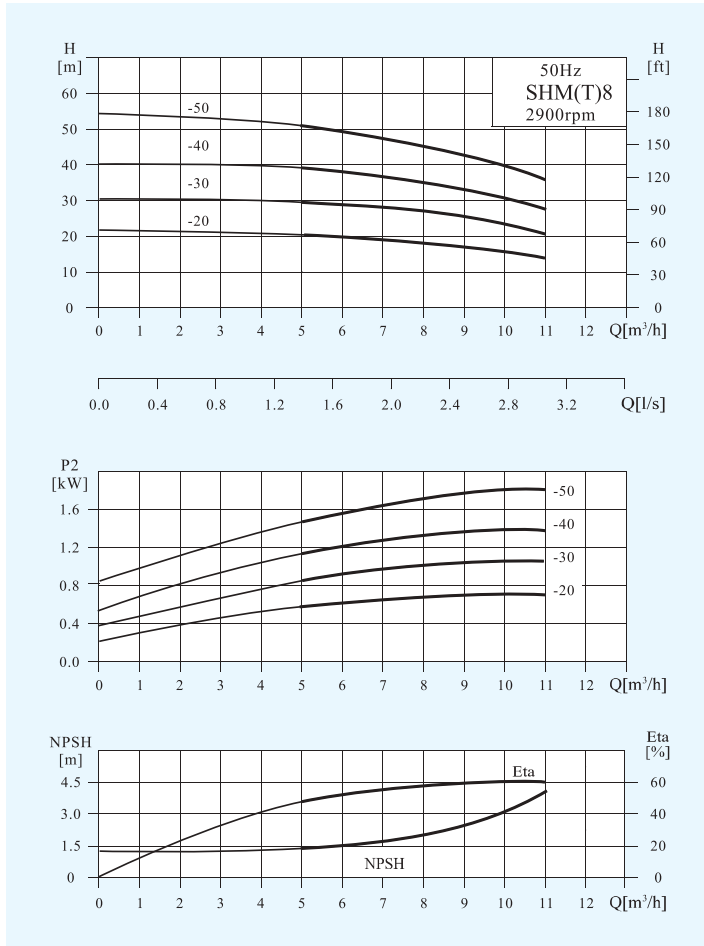


Performance Table

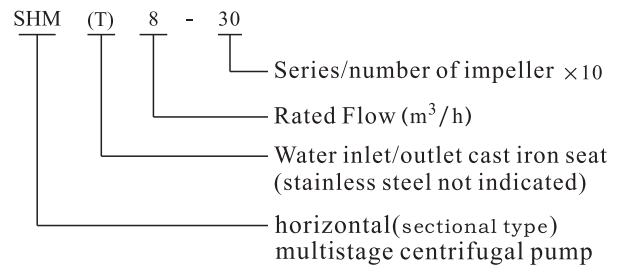
Model	Associated motor		Q (m ³ /h)	5	6	7	8	9	10	11
	(kW)	(hp)								
SHM(T)8-20	0.75	1	H (m)	19.5	19	18.5	17.5	16.5	15	13.5
SHM(T)8-30	1.1	1.5		29	28.5	27.5	26.5	24	22	20
SHM(T)8-40	1.5	2		39	38	36.5	35	32	29.5	26
SHM(T)8-50	2.2	3		50.5	49	46.5	44	41	38	33

Stainless Steel Horizontal Multistage Pump — SHM(T)8

Performance Curves



SHM/SHMT

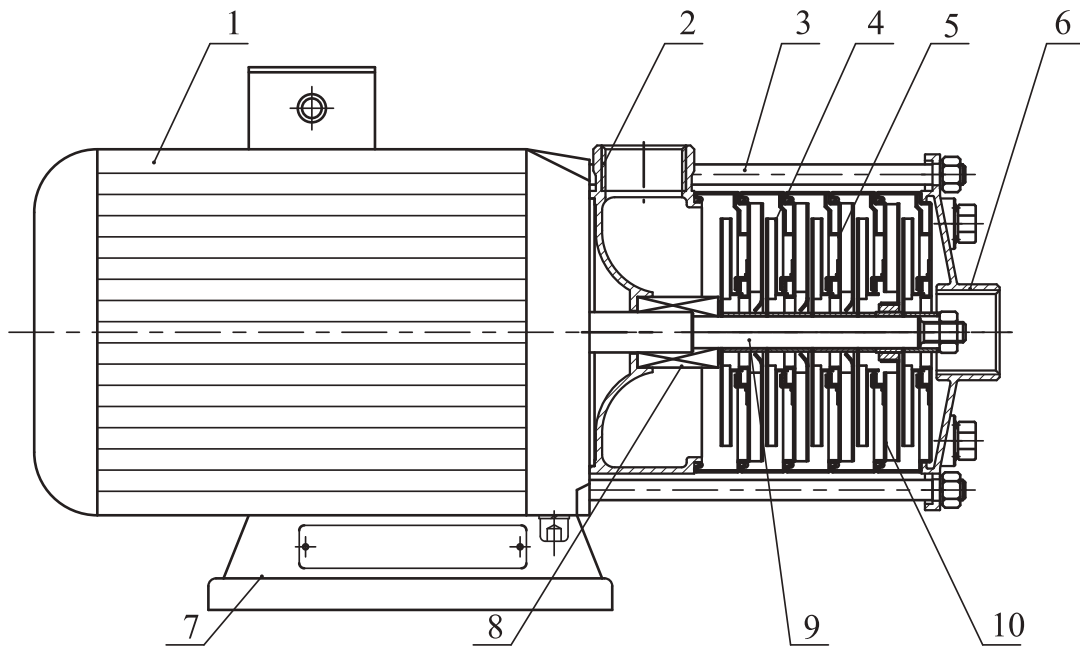


Dimension & Weight

Motor	Model	Specification (mm)						Net Weight (kg)
		L	L1	L2	L3	H	D	
Three phase /Single phase	SHM(T)8-20	395	/100	126	108	230/265	170	20
	SHM(T)8-30	425	/100	156	138	230/265	170	24
	SHM(T)8-40	490	/100	186	168	240/270	180	28
	SHM(T)8-50	520	/100	216	198	240/270	180	30

Stainless Steel Horizontal Multistage Pump — SHM(T)8

Structure chart:SHM



Material:SHM

NO	Description	Material	AISI/ASTM	NO	Description	Material	AISI/ASTM
1	Motor	Assembling unit		6	Inlet seat	Stainless	AISI304
2	Outlet seat	Stainless steel	AISI304	7	Base plate	Steel	AISI11015
3	Tie rod	Stainless steel	AISI304	8	Mechanical seal	Assembling unit	
4	Impeller	Stainless steel	AISI304	9	Shaft	Stainless	AISI304
5	Diffuser	Stainless steel	AISI304	10	Support diffuser.	Stainless	AISI304