

Stainless Steel Vertical Multistage Pump SVM(T)1

Applications

- Water supply
- Industry pressure boosting
- Industry liquid transfer
- Water treatment
- Irrigation

Motor

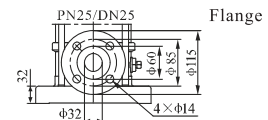
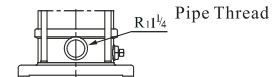
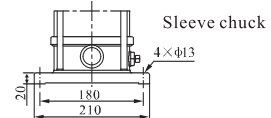
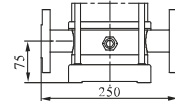
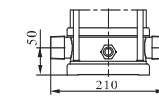
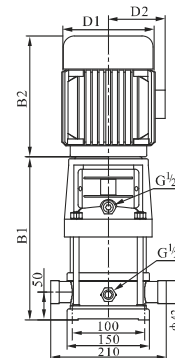
- Totally enclosed, air-cooled secondary standard motor
- Degree of protection: IP 55
- Insulation class: F
- Standard voltage: 1x220-230/240V (50Hz) 3x200-220/346-380V 3x220-240/380-415V 3x220-255/380-440V
- Other voltage of the motor is available on request.
- Single phase motors from 0.37kW-2.2kW are available on request

Operation conditions

- Thin, clean, non-flammable and explosive and not containing solid particles or fibers liquid.
- Liquid Temperature:
Normal temperature: +15°C~+70°C
Hot water: -15°C~+105°C
- Environment Temperature: Max. 40°C
- Altitude: Max. 1000m

Material

- Inlet & outlet chamber: Cast iron/Stainless steel (304/316)
- Impeller: Stainless steel (304/316)
- Shell: Stainless steel (304/316)
- Shaft: Stainless steel (304/316)
- Coupling: Ductile iron
- Bearing: Tungsten carbide
- Mechanical seal: Tungsten Carbide / Graphite

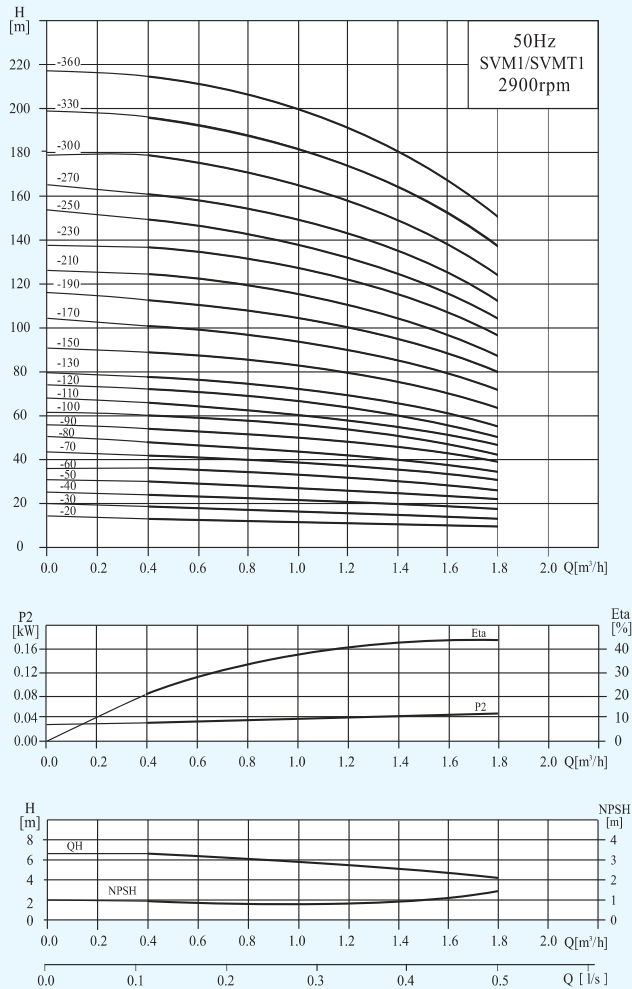


Dimension&Weight

Model	Size (mm)					Net Weight(kg)
	B1	B2	B1+B2	D1	D2	
SVM1-20	258	225	483	148	117	20
SVM1-30	276	225	501	148	117	20
SVM1-40	294	225	519	148	117	21
SVM1-50	312	225	537	148	117	21
SVM1-60	330	225	555	148	117	22
SVM1-70	348	225	573	148	117	23
SVM1-80	366	225	591	148	117	24
SVM1-90	384	225	609	148	117	25
SVM1-100	402	225	627	148	117	26
SVM1-110	420	225	645	148	117	26
SVM1-120	448	245	693	170	142	29
SVM1-130	466	245	711	170	142	30
SVM1-150	502	245	747	170	142	31
SVM1-170	538	245	783	170	142	33
SVM1-190	574	245	819	170	142	34
SVM1-210	610	245	855	170	142	35
SVM1-230	646	245	891	170	142	36
SVM1-250	692	290	982	190	155	42
SVM1-270	728	290	1018	190	155	43
SVM1-300	782	290	1072	190	155	45
SVM1-330	836	290	1126	190	155	49
SVM1-360	890	290	1180	190	155	51

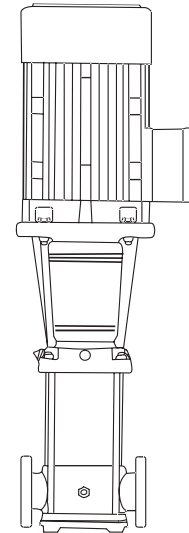
Stainless Steel Vertical Multistage Pump SVM(T)1

Performance Curves



Model Description

SVM(T)1/2/3/4/5/8/10/12/15/16/20



SVM/SVMT

SVM T 8 - 120

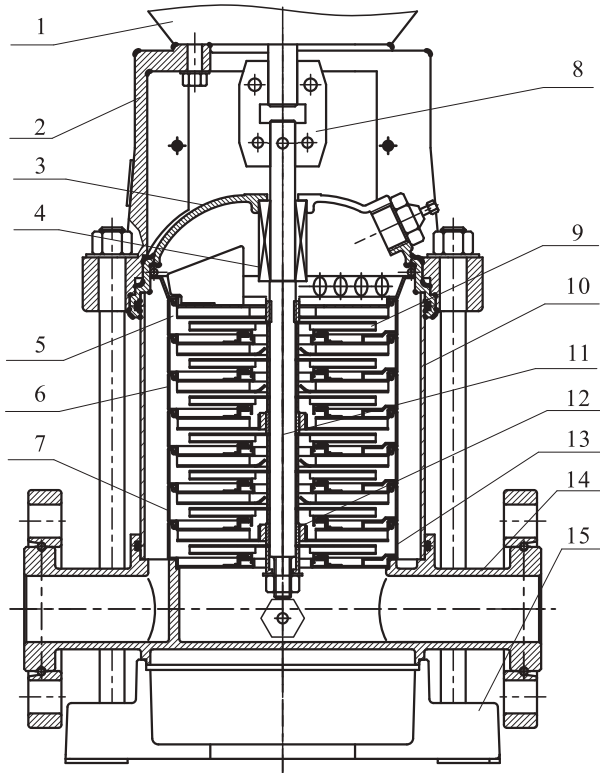
- Serial / number of impeller x10
- Rated Flow (m³/h)
- Cast Iron (Stainless steel not Indicated)
- Vertical multistage centrifugal pump

Performance Table

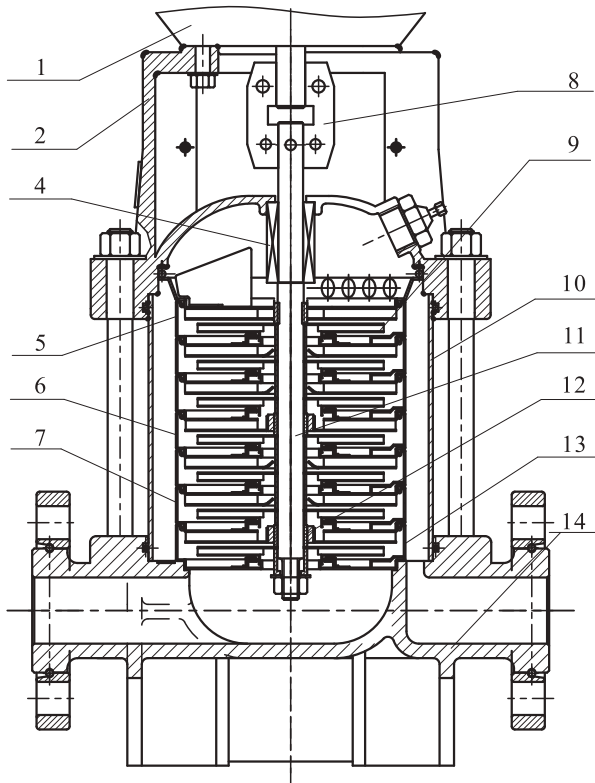
Model	Associated motor(kW)	Q (m³/h)	0.4	0.6	0.8	1.0	1.2	1.4	1.6	1.8
SVM1-20	0.37	H (m)	13	12.5	12	11.5	11	10.5	10	9.5
SVM1-30	0.37		19	18	17.5	17	16.5	16	15	14
SVM1-40	0.37		24	23.5	23	22.5	21.5	21	19	18
SVM1-50	0.37		30	29.6	29	28	27	26	24	22
SVM1-60	0.37		36	35.5	35	33.5	33	31	28	26
SVM1-70	0.37		42	41	40.5	39	38	36	33	30
SVM1-80	0.55		48	47	46	45	43	41	38	34
SVM1-90	0.55		54	53	52	51	49	46	43	39
SVM1-100	0.55		60	59	58	57	54	51	48	43
SVM1-110	0.55		66	65	63	61	59	56	52	47
SVM1-120	0.75		72	71	69	67	64	61	57	51
SVM1-130	0.75		78	77	75	73	69	66	62	55
SVM1-150	0.75		89	88	86	84	79	76	71	63
SVM1-170	1.1		101	99	97	95	89	86	80	71
SVM1-190	1.1		113	110	108	106	99	96	89	79
SVM1-210	1.1		124	122	120	117	110	106	98	87
SVM1-230	1.1		137	133	131	128	121	116	107	96
SVM1-250	1.5		149	145	143	139	131	126	116	104
SVM1-270	1.5		161	157	155	150	141	136	125	112
SVM1-300	1.5		178	175	171	166	157	150	139	124
SVM1-330	2.2		196	192	188	183	173	165	154	137
SVM1-360	2.2		214	210	205	200	190	181	169	151

Stainless Steel Vertical Multistage Pump SVM(T)1

Structure chart:SVM(T)1/2/3/4/5



SVM



SVMT

Material:SVM(T)1/2/3/4/5

No	Description	Material	AISI/ASTM
1	Motor	Assembling unit	
2	Support	Cast Iron/ Ductile iron	ASTM25B ASTM70-50-05
4	Mechanical seal	Assembling unit	
5	Outlet guide vane	Stainless Steel	AISI304
6	Guide vane	Stainless Steel	AISI304
7	Support guide vane	Stainless Steel	AISI304
8	Coupling	Ductile iron	ASTM70-50-05
9	Impeller	Stainless Steel	AISI304
10	Shell	Stainless Steel	AISI304
11	Pump Shaft	Stainless Steel	AISI304 AISI316L
12	Bearing	Tungsten Carbide	
13	Inlet guide vane	Stainless Steel	AISI304
SVM			
3	seal seat	Stainless Steel	AISI304
14	Inlet &outlet seat	Stainless Steel	AISI304
15	Seat	Cast Iron	ASTM25B
SVMT			
14	Inlet &outlet seat	Cast Iron	ASTM25B